



Impact **REPORT** **2024**



GOD IS MOVING POWERFULLY THROUGH THIS WORK

In 2024, LifeWise Academy continued its mission to deliver **Bible education to public school students DURING SCHOOL HOURS**. Since piloting two programs just five years ago, the commitment of supporters like you has enabled the launch of hundreds of local LifeWise programs, offering weekly Bible classes to tens of thousands of students nationwide.

This year’s impact report provides a snapshot of that remarkable journey and illustrates how LifeWise is moving closer to our vision of reaching 50 million public school students in all 50 states. As you’ll see, the data tells a story of significant growth and positive impact during the past school year.

Yet numbers are just part of the picture. Each week, inspiring stories pour in from local LifeWise programs, celebrating lives and families transformed by the hope of Jesus Christ. God is moving powerfully through this work, and it’s an honor to partner with you on this journey.

Thank you for making a lasting difference for the next generation.



JOEL PENTON
Founder & CEO

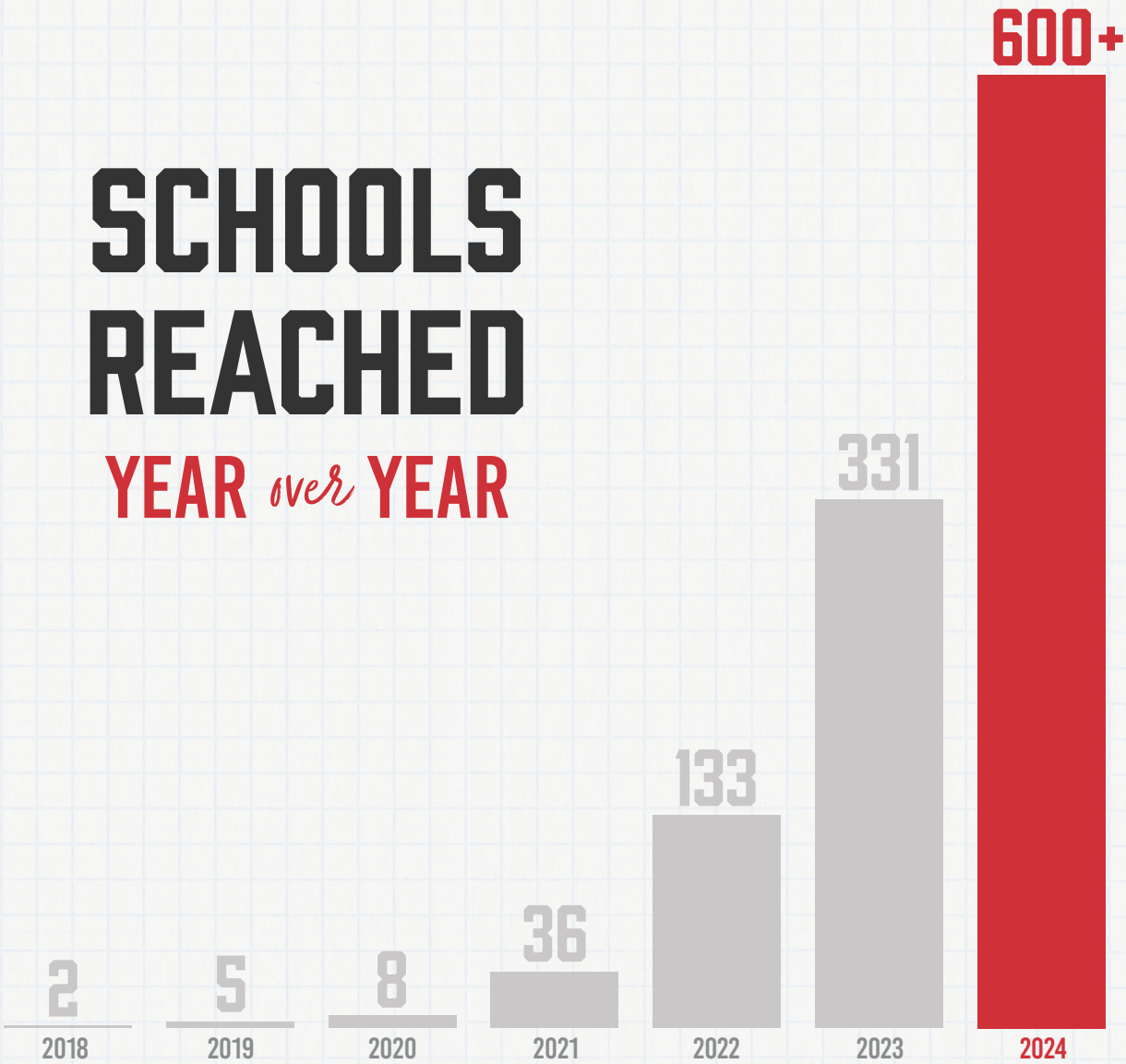




1	FROM THE CEO	9	FULL-LENGTH DOCUMENTARY RELEASE
3	EXPONENTIAL GROWTH	10	IN THE MEDIA
4	CURRENT REACH	11	OUR LEADERSHIP
5	A YEAR OF IMPACT	12	FINANCIAL STEWARDSHIP
6	STORIES FROM THE CLASSROOM	13	HOW THE DOLLARS ARE INVESTED
7	SPRING 2024 SURVEYS	14	FISCAL YEAR 2024 SPENDING
8	KEY INITIATIVES	15	LOOKING FORWARD

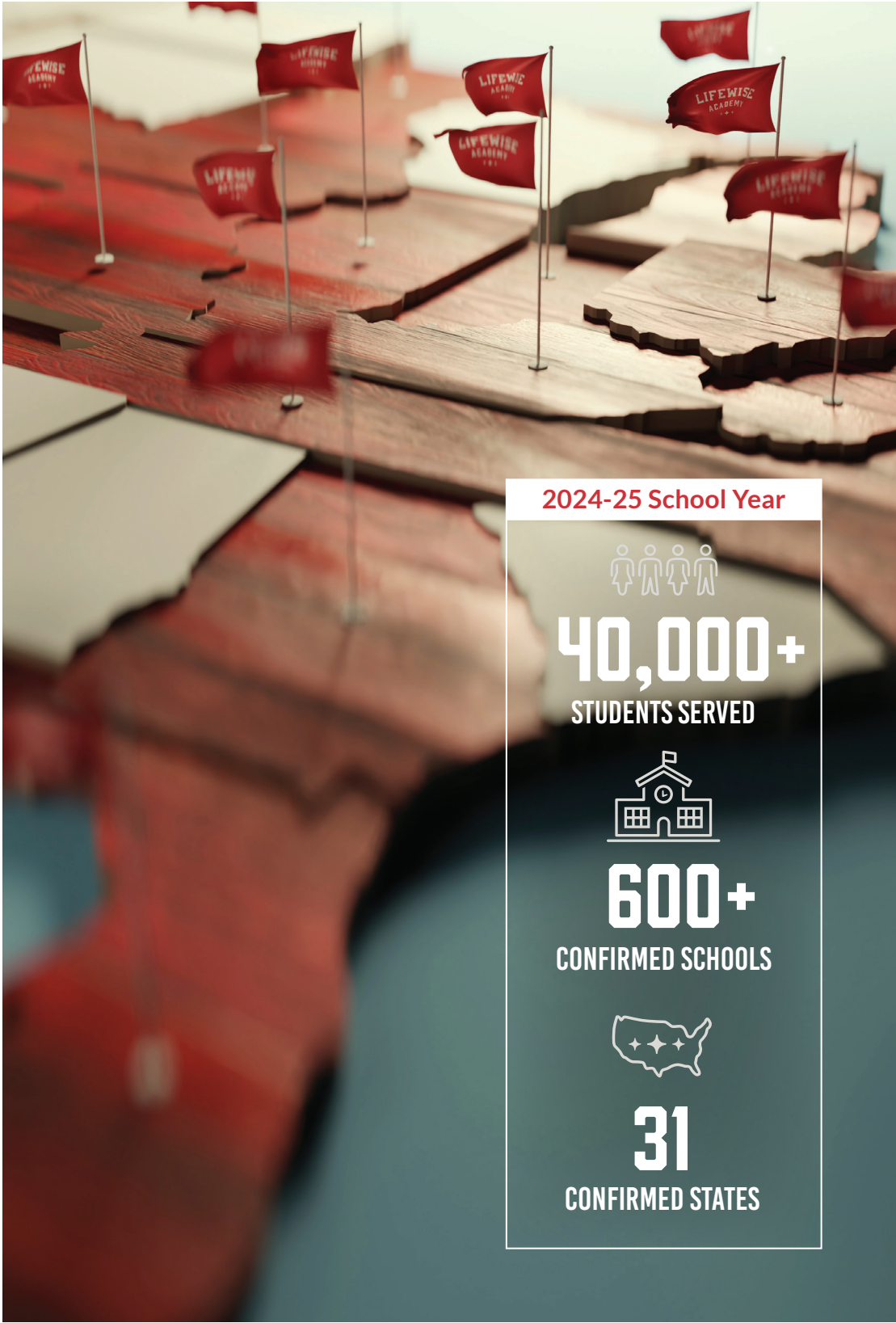
SCHOOLS REACHED

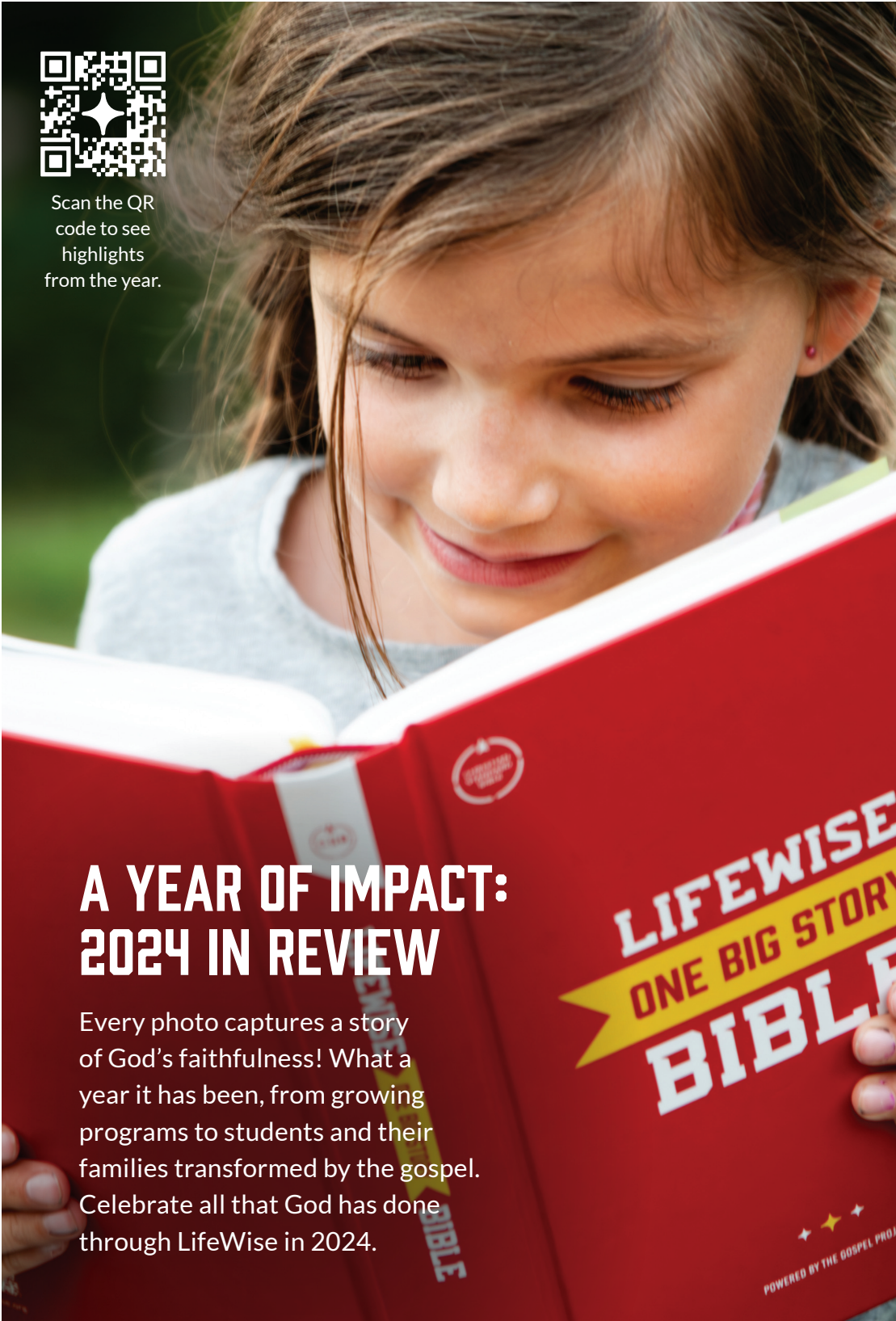
YEAR *over* YEAR



COMMUNITY INTEREST SIGNATURES

SIGNATURES	510	9,863	34,724	67,669	136,265
SCHOOL DISTRICTS	12	296	694	2,195	5,947
	2020	2021	2022	2023	2024





“WHAT WE’RE SEEING IS LIVES BEING CHANGED.”

A LifeWise Director

“I’ve never had a Bible before! I’m going to read it every night!”
A LifeWise Student



“I wish we had LifeWise every day.”
A LifeWise Student

“To see students connecting the dots of who God is and how much He loves them is a privilege.”

A LifeWise Teacher

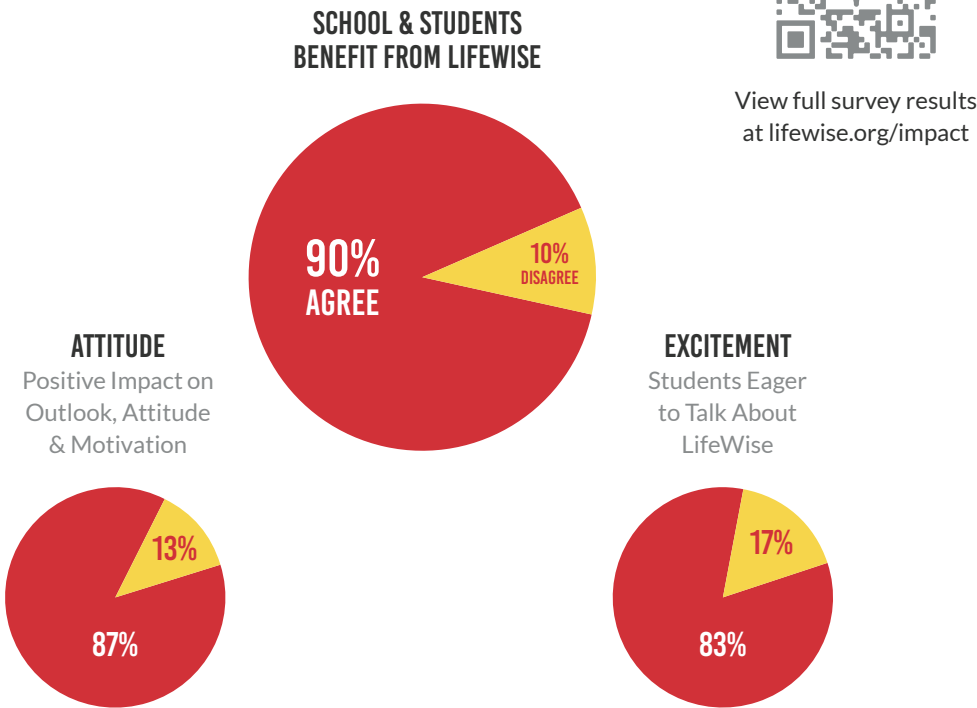
“MY SON COMES HOME WITH BIBLE STORIES HE’S EXCITED TO TALK ABOUT.”
A LifeWise Parent



Scan the QR code to see impact stories.

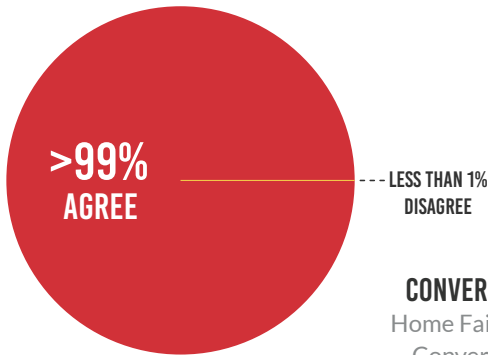
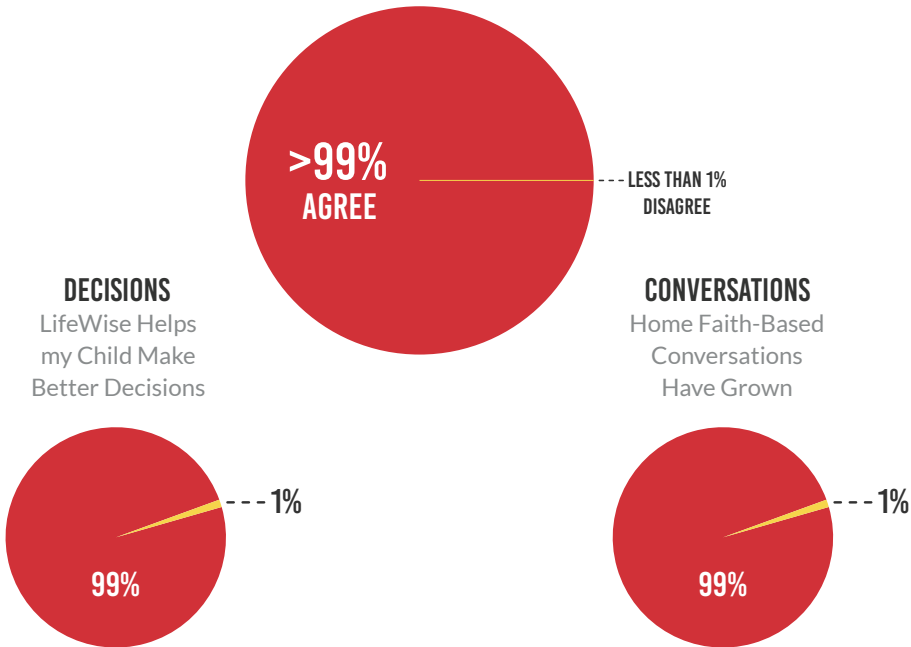
EDUCATOR RESPONSES

Results based on 769 educator respondents.



View full survey results at lifewise.org/impact

RECOMMENDS OTHER PARENTS ENROLL CHILDREN



STATE LEGISLATION

In 2024, three states passed laws ensuring public school students have access to released time programs like LifeWise. Each was achieved in part through LifeWise’s advocacy and leadership. These milestones are paving the way for similar legislation in other states.



LifeWise leaders attended the bill signing with Oklahoma Governor Kevin Stitt.

INDIANA
HOUSE BILL 1137
March 13, 2024

OKLAHOMA
HOUSE BILL 1425
June 5, 2024

OHIO
HOUSE BILL 8
December 18, 2024

BUILDING THE FUTURE OF LIFEWISE

Renovations are underway at the new LifeWise office and training center which will advance the mission with a three-fold purpose:

- EQUIP new leaders
- SUSTAIN local programs
- AMPLIFY the message nationwide



FULL-LENGTH DOCUMENTARY RELEASE

OFF SCHOOL PROPERTY

SOLVING
THE SEPARATION OF
CHURCH AND STATE

Written and Directed by Nate Lundquist

This year, LifeWise Academy celebrated a significant milestone with the premiere of *Off School Property: Solving the Separation of Church and State* at Museum of the Bible in Washington, D.C. This compelling documentary explores the historical removal of the Bible from public education—a pivotal event that reshaped American society—and presents a vision for how balanced, constitutionally-sound religious instruction can bring hope to students, schools, and communities nationwide.



IN THE MEDIA

HOPE FOR OUR CHILDREN

THROUGH BIBLE EDUCATION

PROGRAM SUCCESS HAS

EXCEEDED EXPECTATIONS

LIFEWISE SEEING
‘EXPONENTIAL
GROWTH’

Featured in



The Washington Times



Washington
Examiner

And 50+ Other News Sites





Jesus
King

LifeWise Academy ultimately exists under the authority of King Jesus, and our mission is to honor Him in all we do.



Joel Penton
Founder & CEO



Steve Clifton
COO & CFO



Derek Stemen
VP of Advancement



Sara Spath
VP of Program Health



Jeff Peterson
VP of Operations



Nate Lundquist
VP of Creative



Emily Warner
VP of IT



Jesse Vohwinkel
VP of Growth

BOARD OF DIRECTORS

Steve Hubbard
Pastor
Ebenezer Baptist Church

Brad Hulls
Owner
Kitchen Solvers Columbus

Justin Kershaw
Founder
Sow Strong Food | Venia Medical

Dave Kirkey
President
Kirkey & Co., Inc.

Tim Stoller
Founder & CEO
Strategence Capital

“WHAT CAN YOU GIVE TO
THAT HAS AN IMPACT ON
10 GENERATIONS
LIKE LIFEWISE DOES?
I CAN’T THINK OF ONE.”

A LifeWise Donor

RECOGNITION FOR EXCELLENCE

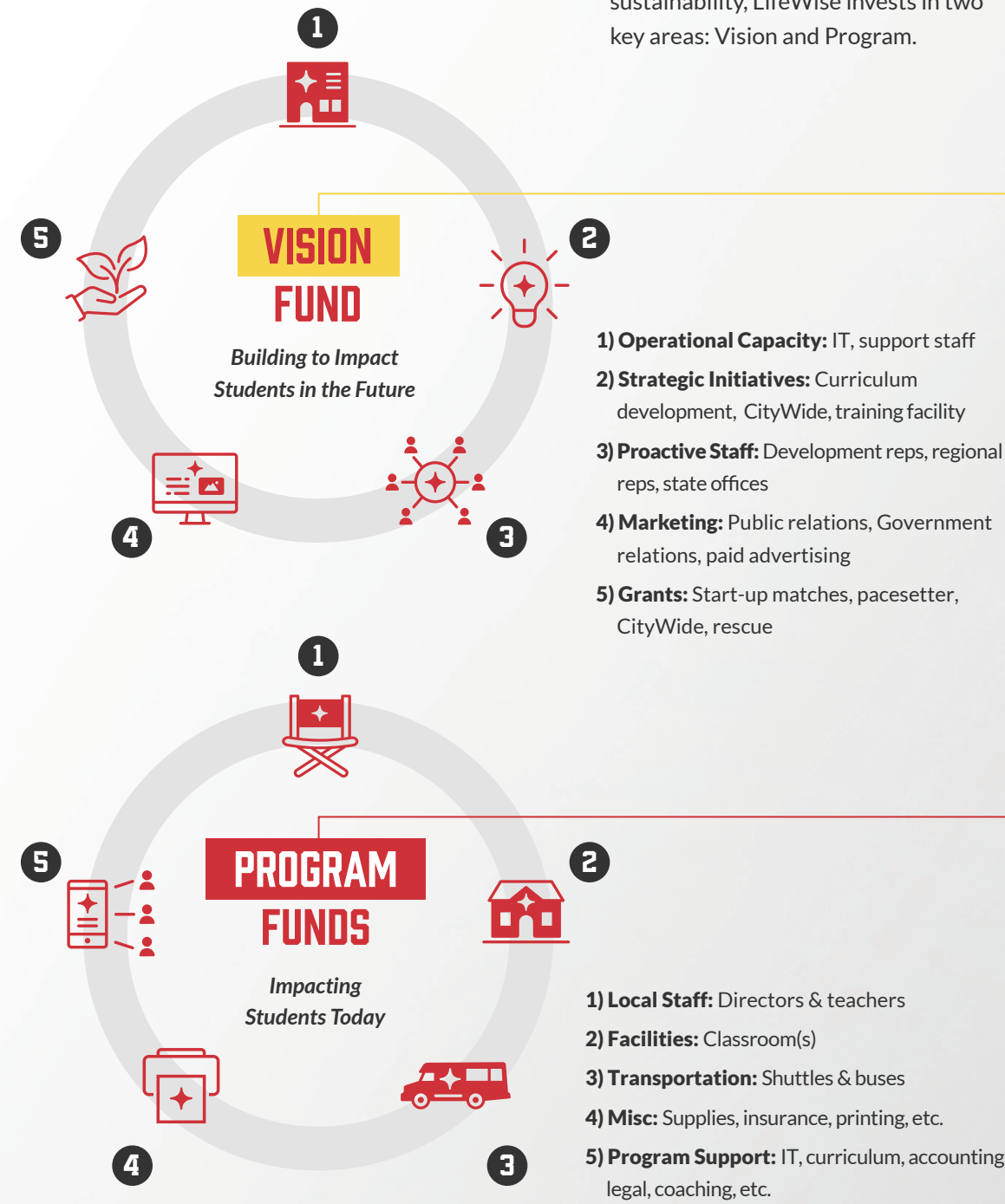
LifeWise has successfully undergone an audit by Rea & Associates, affirming our commitment to strong financial controls and responsible stewardship. Rea & Associates stated, “As we completed our second audit with the LifeWise Academy team, it was evident how their dedication to transparency and precision has strengthened. This year, we saw the results of their continued commitment to building a robust financial framework, supporting their mission of long-term growth and trust. It’s a privilege to collaborate with an organization so focused on excellence.”



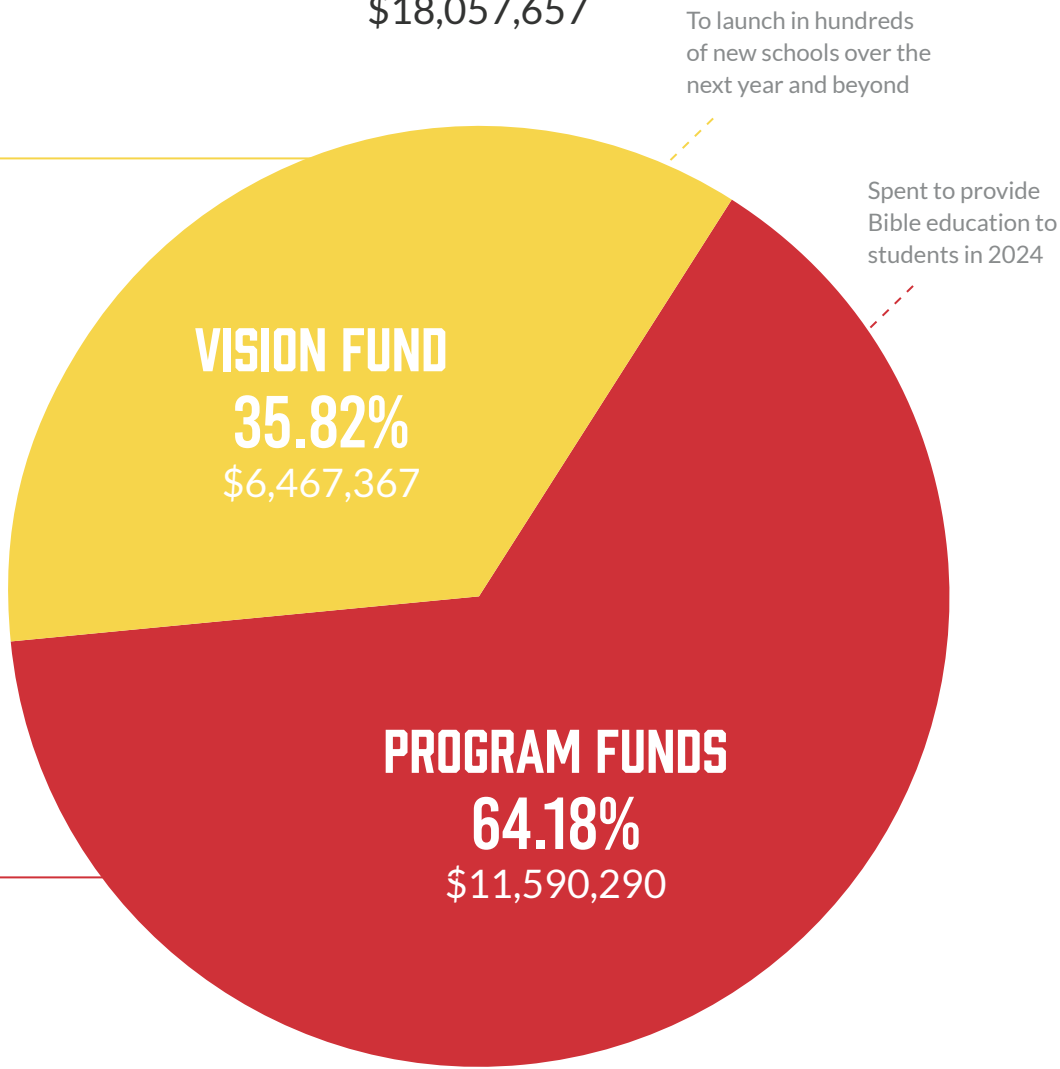
LifeWise is recognized as a top-tier organization by both Candid and Charity Navigator for financial stewardship, transparency and accountability. LifeWise has been awarded a Certified Transparency Seal from Excellence in Giving and a Platinum Seal of Transparency from Candid.



For exponential growth and long-term sustainability, LifeWise invests in two key areas: Vision and Program.



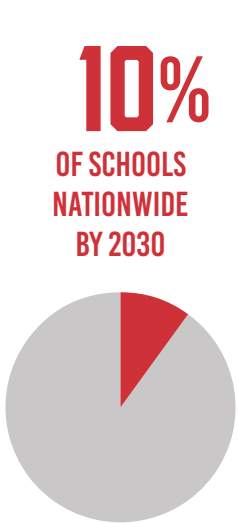
TOTAL SPEND:
\$18,057,657



While the Program Funds (funded locally) impact students today by sustaining local programs, the Vision Fund (funded centrally) impacts students in the future by building out the infrastructure, resources and team necessary to sustain exponential growth.

WHERE WE ARE GOING

OUR GOALS TO REACH THE NATION



WHAT IT WILL TAKE

THE VISION FUND PLAN

KEY INITIATIVE



NATIONAL INFRASTRUCTURE

For operational scalability, LifeWise must continue to rapidly build the tools and resources necessary to catalyze and support local community efforts.

AREAS OF FOCUS



CITYWIDE

LifeWise CityWide opens the door for every neighborhood school and local church to be a part of the LifeWise movement.



STATEWIDE

For geographical permeation, strategies include identifying the people, applying the process and optimizing policies.



FOUNDATION

For generational sustainability, LifeWise has established a national endowment through the LifeWise Foundation.

A photograph of a red school bus with white trim. A woman in a red long-sleeved shirt and blue jeans is standing outside, reaching up towards a young boy who is leaning out of the open window of the bus. The boy is wearing a black long-sleeved shirt. The bus has large windows reflecting the surrounding trees and sky. The scene is set outdoors on a sunny day with green trees in the background.

You can be **THE DIFFERENCE**

LifeWise Academy is on a mission to bring Bible education to public school students during school hours. Our vision is to equip the next generation with the transformative message of God's Word, making a lasting impact for students, families and communities nationwide. Help shape the future by investing in LifeWise Academy.

**“ALL YOUR CHILDREN
WILL BE TAUGHT
BY THE LORD,
AND GREAT WILL
BE THEIR PEACE.”**

ISAIAH 54:13

LIFE

ACA